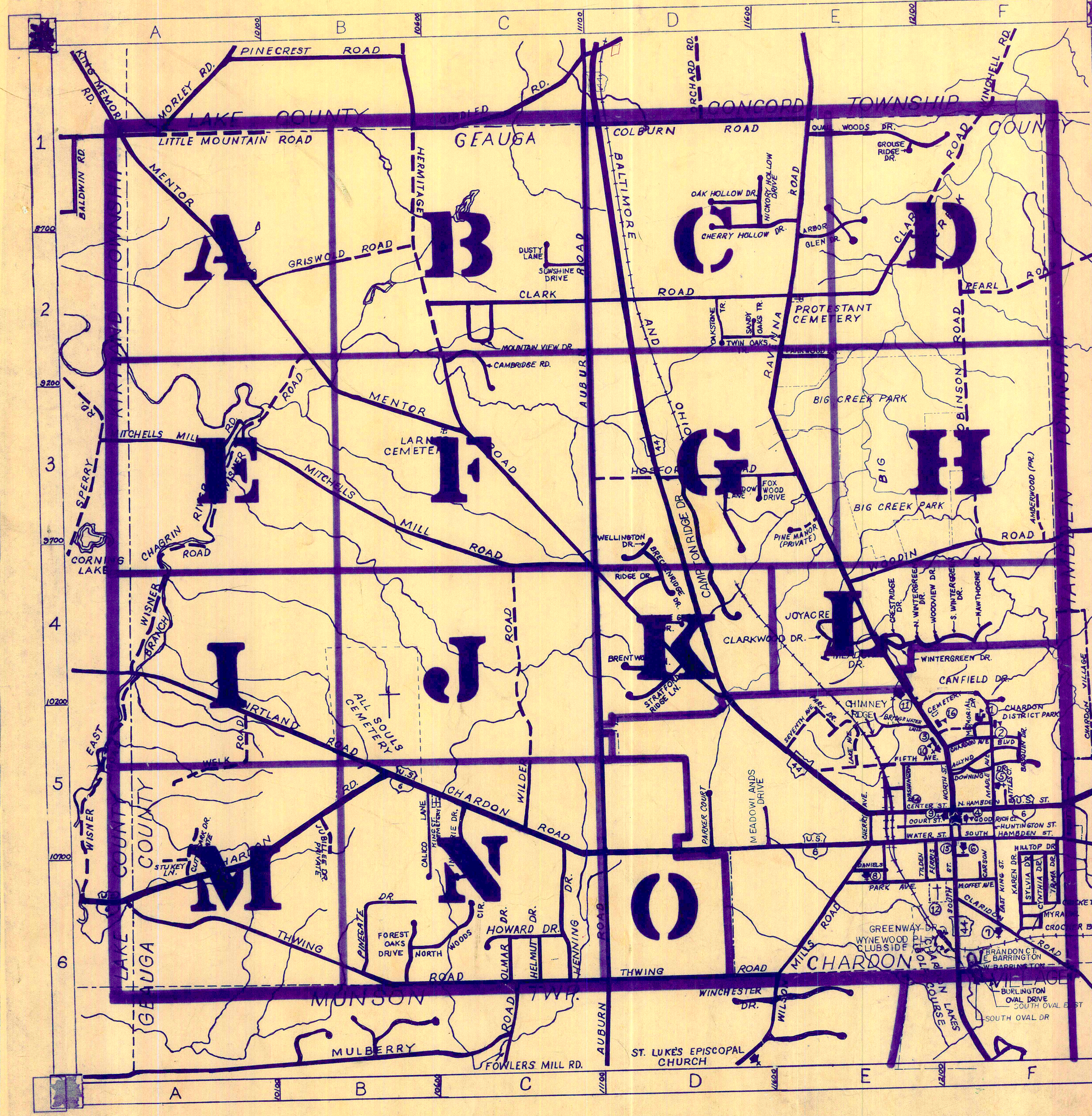


ROAD INDEX



C.V. = CHARDON VILLAGE

| | | | | | |
|----------|---------------------|-----------------------|---------------------|-----------------------|----------------------|
| A | ALLOYD BLVD. CV | H cont. | HELMUT DR. C6 | P cont. | PEARL RD. E2-F2 |
| B | AMBERWOOD (PVT.) F3 | HEWING DR. C6 | HERMITAGE RD. B1-C3 | PINEGATE DR. B6 | PINE MANOR (PVT.) E3 |
| C | ARBOR GLEN DR. E2 | HICKORY HOLLOW DR. E2 | HILLTOP DR. C.V. | QUAIL WOODS DR. E1-F1 | |
| D | AUBURN RD. C1-D6 | HOSFORD RD. D3-E3 | HOWARD DR. B6 | | |
| E | | HUNTINGTON ST. C.V. | | | |
| F | | | | | |
| G | | | | | |
| H | | | | | |
| I | | | | | |
| J | | | | | |
| K | | | | | |
| L | | | | | |
| M | | | | | |
| N | | | | | |
| O | | | | | |
| P | | | | | |
| Q | | | | | |
| R | | | | | |
| S | | | | | |
| T | | | | | |
| U | | | | | |
| V | | | | | |
| W | | | | | |
| X | | | | | |
| Y | | | | | |
| Z | | | | | |

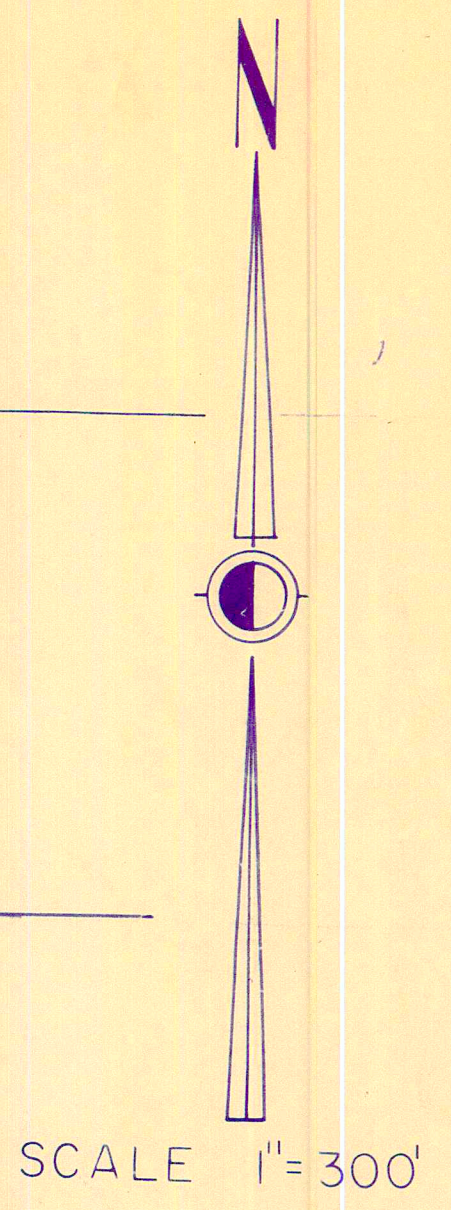
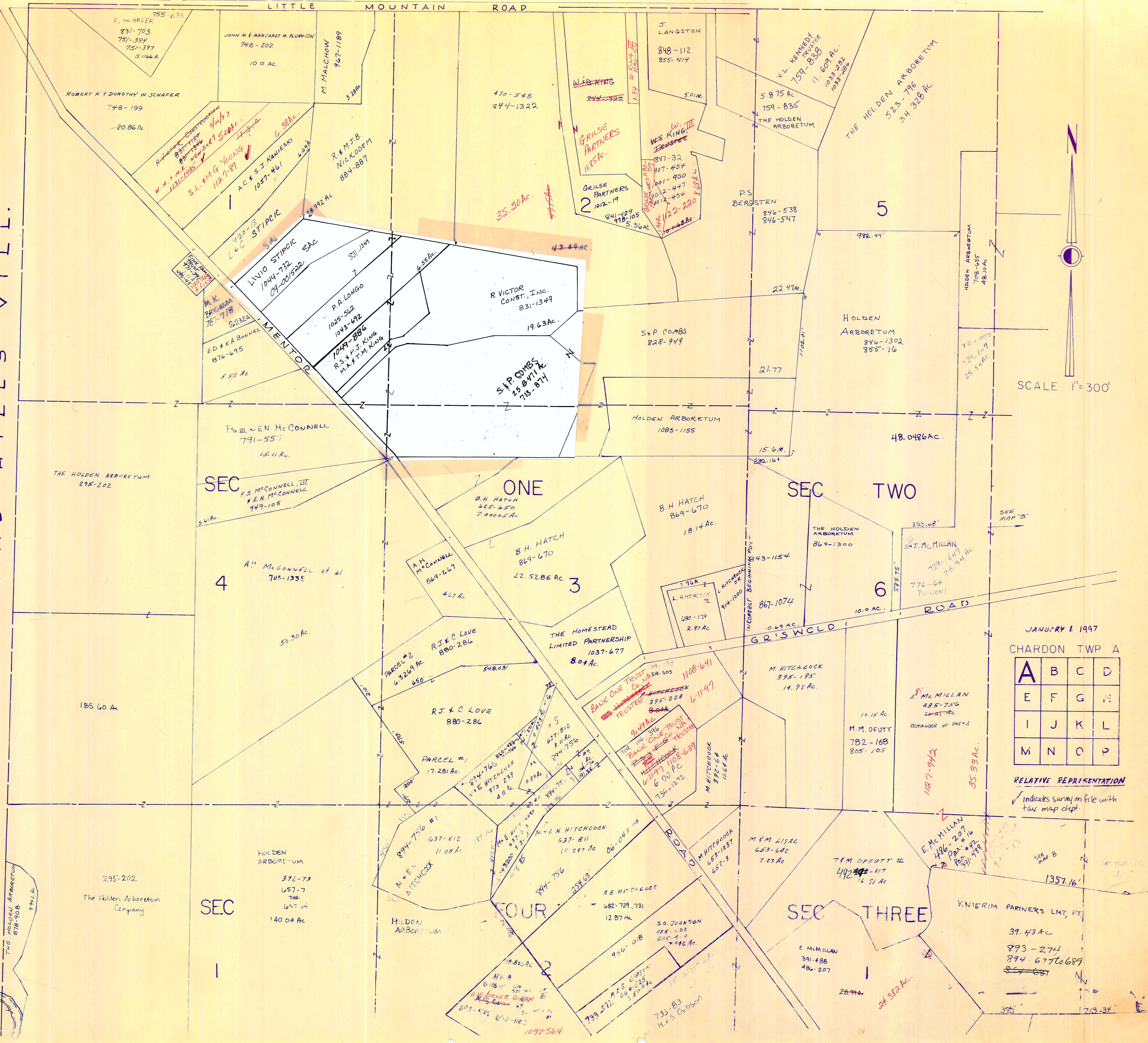
- 1 CHARDON HIGH SCHOOL
- 2 CHARDON MAPLE ELEM. SCHOOL
- 3 SAINT MARY'S ELEM. SCHOOL
- 4 PARK ELEM. SCHOOL
- 5 CHURCH OF CHRIST
- 6 PILGRIM CHRISTIAN CHURCH
- 7 KINGDOM HALL OF JEHOVAH'S WITNESSES
- 8 CHARDON ASSEMBLY OF GOD CH.
- 9 SAINT MARY'S CHURCH
- 10 CHARDON METHODIST CHURCH
- 11 CHARDON VILLAGE CEMETERY
- 12 GEAGA COUNTY COURT HOUSE
- 13 UNITED STATES POST OFFICE
- 14 CHARDON VOL. FIRE DEPT.
- 15 CHARDON MIDDLE SCHOOL

CHARDON TOWNSHIP

SCALE: 1" = 2000'
 ROBERT L. PHILLIPS,
 GEAGA COUNTY ENGINEER

- UNPAVED ROAD
- == PAVED ROAD
- ++++ RAILROAD
- TOWNSHIP LINE
- COUNTY LINE
- CORPORATION LINE

LAKERTLAND CHILSTY VILL.



JANUARY 1 1997
CHARDON TWP A

| | | | |
|---|---|---|---|
| A | B | C | D |
| E | F | G | H |
| I | J | K | L |
| M | N | O | P |

RELATIVE REPRESENTATION
Indicates survey on file with tax map dept.

THE HOLDEN ARBORETUM
878-708
9.92 AC.

295-202
The Holden Arboretum Company
392-73
657-7
THRU
657-24
140.04 AC.

KNIERIM PARTNERS LMT. PT.
39.43 AC
893-274
894-6770689
85-687

E. McMILLAN
391-488
486-207
28.99 AC.

H.W. BIRCHETT GRASS
607-404
610-1102
1092-564

30. JOHANSON
425-682
508-4-9
446 AC.

T.M. OFUTT II
492-117
16.91 AC.

M. & M. LISAC
653-642
7.23 AC.

M. HITCHCOCK
657-1237
657-9

M. & N. HITCHCOCK
627-811
12.297 AC.

M. & E. HITCHCOCK
627-812
11.05 AC.

M. & N. HITCHCOCK
637-812
11.05 AC.

M. & N. HITCHCOCK
637-812
11.05 AC.

M. & N. HITCHCOCK
637-812
11.05 AC.

M. & N. HITCHCOCK
637-812
11.05 AC.

M. & N. HITCHCOCK
637-812
11.05 AC.

M. & N. HITCHCOCK
637-812
11.05 AC.

M. & N. HITCHCOCK
637-812
11.05 AC.

M. & N. HITCHCOCK
637-812
11.05 AC.

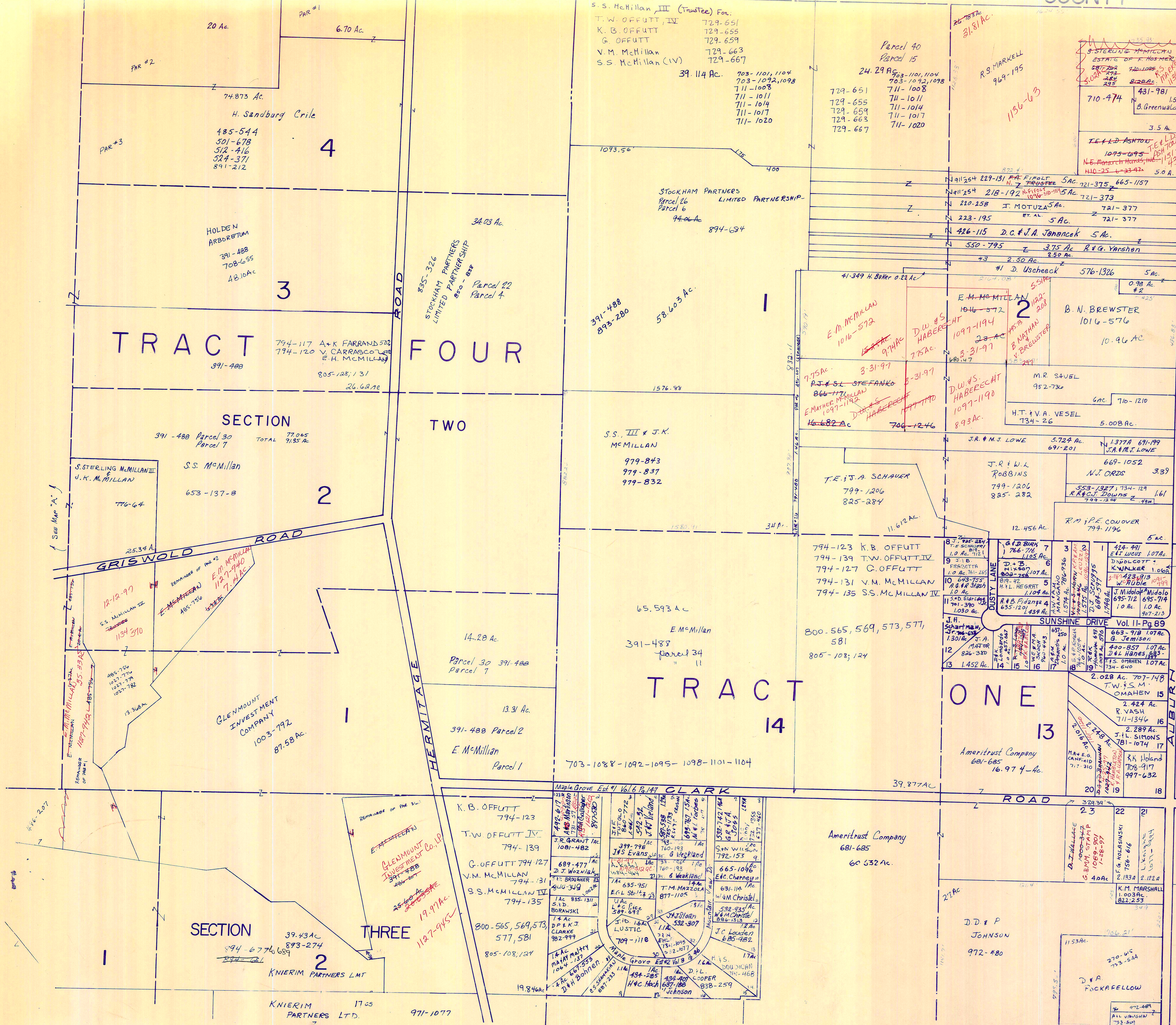
M. & N. HITCHCOCK
637-812
11.05 AC.

M. & N. HITCHCOCK
637-812
11.05 AC.

M. & N. HITCHCOCK
637-812
11.05 AC.

M. & N. HITCHCOCK
637-812
11.05 AC.

M. & N. HITCHCOCK
637-812
11.05 AC.

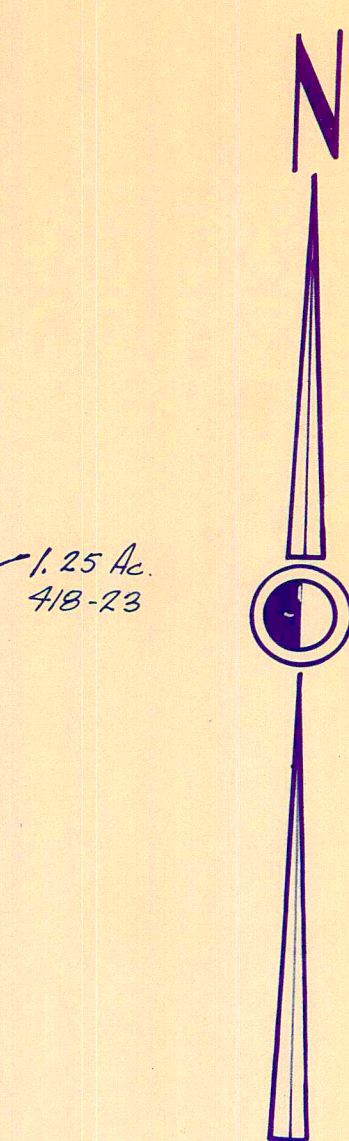


TRACT FOUR

TRACT ONE

SECTION THREE

SECTION TWO



SCALE 1" = 300'
JAN. 1, 1997

CHARDON TWP "B"

| | | | |
|---|---|---|---|
| A | B | C | D |
| E | F | G | H |
| I | J | K | L |
| M | N | O | P |

RELATIVE REPRESENTATION

* Inadequate description

✓ indicates survey on file with tax map dept.

L A K E C O U N T Y



N

5

SCALE 1"=300'

JAN. 1, 1997

| | | | |
|---|---|---|---|
| A | B | C | D |
| E | F | G | H |
| I | J | K | L |
| M | N | O | P |

RELATIVE REPRESENTATION
CHARDON TWP.

✓ indicates survey
on file with tax map
Dep.

* Inadequate
description

Estate of 14-69
F.H. Hooper
Sub Divisions No. 1

13
R. + P. Hunter
810-1227

M.D. NOLAN
2,0035 Ac.
842-822 &
828

AG. CAMPANE
611-476

4.2.7.737

11
L.L.J. HELLINGS
1836-912

12
R.A. PARVIS
386-1198

13
D.S. SIRAN
858-559

14
M.L. RICKARD
788-64

15
D.H. + M.A. PERCE
865-1203

523-843
J.R. DORRICK
778-1195

2
574-394
P. Times

K.E. + J. PAINTER
550-1261

14
R.P. + M.L. SIMPSON
765-1149

C. PATTERSEN
10,679 Ac.
809-61

G.J. DEWEY, JR.
840-1042 815-1153

W.R. + M.M. NELLS
917-702

J.K. + C.A. HONG
740-1236

15
D.H. + M.A. PERCE
865-1203

WILLIAM PRESLEY
WALTER PRESLEY
816-1260 807-1006

3
49.93 A

M.L. RICKARD
R.L. FLYER

16
J.S. SHANKER
832-224

17
J.S. SHANKER
832-224

40.77 Ac.
48.99 Ac. CHAR TWP. CONCORD SCHOOLS
91.78 Ac. CHAR TWP. CHAR SCHOOLS

4
49.93 A

17
J.S. SHANKER
832-224

18
D.H. + M.A. PERCE
865-1203

19
M.L. RICKARD
788-64

5
5.01 Ac.

6
5.01 Ac.

19
M.L. RICKARD
788-64

20
D.H. + M.A. PERCE
865-1203

21
M.L. RICKARD
788-64

6
5.01 Ac.

7
5.01 Ac.

20
D.H. + M.A. PERCE
865-1203

21
M.L. RICKARD
788-64

22
M.L. RICKARD
788-64

7
5.01 Ac.

8
5.01 Ac.

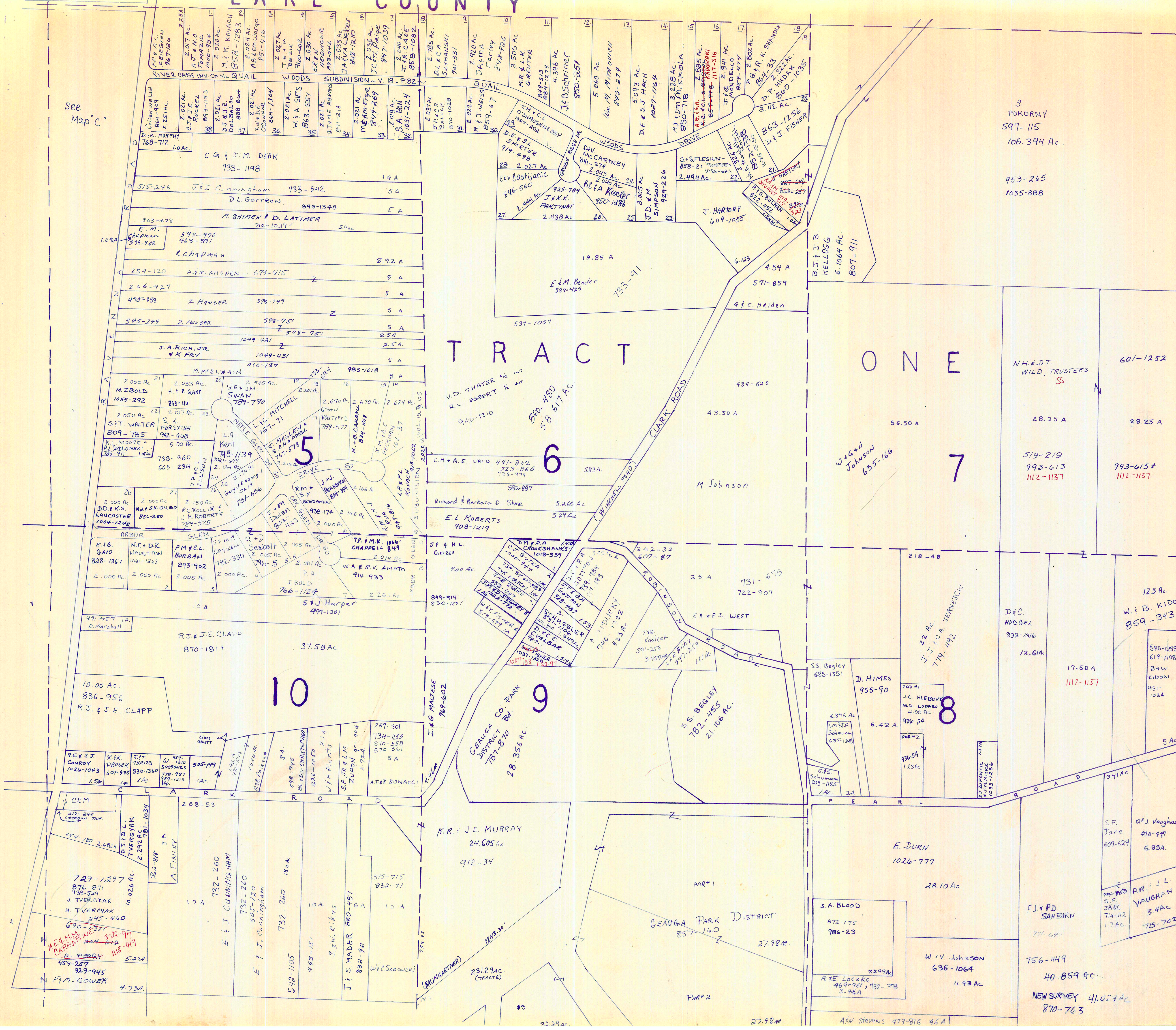
22
M.L. RICKARD
788-64

23
M.L. RICKARD
788-64

24
M.L. RICKARD
788-64

CHARDON COUNTY

See Map 'c'



3
POKORNY
597-115
106.394 Ac.

953-265
1035-888

TRACT ONE

HAMB DEN TOWNSHIP



SCALE 1"=300'

| | | | |
|---|---|---|---|
| A | B | C | D |
| E | F | G | H |
| I | J | K | L |
| M | N | O | P |

CHARDON TWP. 'D'

JANUARY 1, 1997
RELATIVE REPRESENTATION

* Inadequate description

✓ indicates survey on file with tax map dept

CEM.
454-180 2.68 Ac.
729-1297
876-871
139-529
J. TVERGYAK
H. TVERGYAK
245-460
690-1571
M.E. M.M.
CARRARA
822-091
244-242
R. PARR
118-449
459-257
929-945
F.M. GOWEX
473A

268-53
A. FINLEY
732-260
E. J. CUNNINGHAM
732-260
505-120
E. J. CUNNINGHAM
732-260
542-1105
443-151
S.W. RIKAS
J. S. WADER
880-187
832-92
W. Sadowski
231.29 Ac.
(TRACT)

K.R. J.E. MURRAY
24.605 Ac.
912-34
GENUGA CO. PARK
DISTRICT
857-160
27.98 Ac.
PAR#2
27.98 Ac.

E. DURN
1026-777
28.10 Ac.
S.A. BLOOD
872-175
986-23
2299 Ac.
R.E. Laczko
969-961, 132-378
3.96 Ac.
A.W. Stevens 479-816 4.6 A

F.J. & P.D. SANFURN
771-681
756-449
40-859 Ac.
NEW SURVEY 41,024 Ac.
870-763

S.F. Jare
607-624
D.J. Vaughan
470-447
6.83 Ac.
P.R. J.L. VAUGHAN
3.4 Ac.
715-702

10
R.J. & J.E. CLAPP
870-181*
37.58 Ac.
R.E. & S.J. CONROY
1026-1043
1.5 Ac.
R.K. PROSEK
607-995
1 Ac.
J.H. THREISS
830-1360
1 Ac.
W. W. SIMMONS
778-927
859-1813
1 Ac.
505-199
A. FINLEY
303-818
3 A

9
J.E. MALTESE
789-1602
GENUGA CO. PARK
787-870
28.356 Ac.
K.R. J.E. MURRAY
24.605 Ac.
912-34

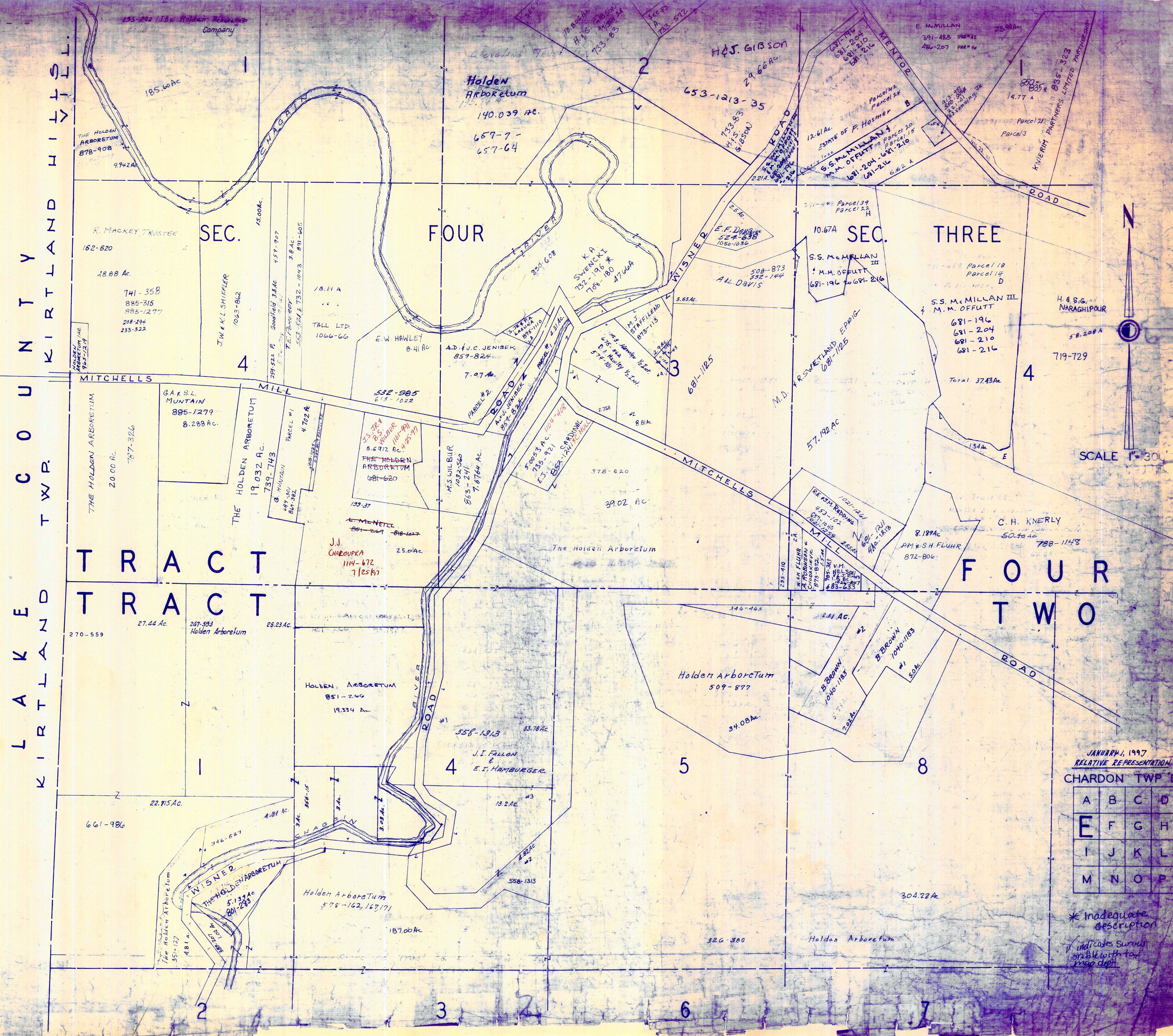
8
S.S. BEGLEY
782-455
21.106 Ac.
D. HINES
955-90
6.42 Ac.
S.S. Begley
685-1551
6.376 Ac.
S.M. Schumann
685-1388
S.F.S. Schumann
603-1185
1/2 Ac.

7
W & W Johnson
635-166
56.50 A
M. Johnson
582-887
5.266 Ac.
5.274 Ac.
E.L. ROBERTS
908-1219
Richard & Barbara D. Shine
582-887
5.266 Ac.
5.274 Ac.

6
E.M. Bender
589-429
19.85 A
733-91
V.D. THAYER 1/2 INT
R.L. ROBERT 1/2 INT
940-1310
C.M. & E. WARD
491-802
523-866
26-974
583A
582-887
5.266 Ac.
5.274 Ac.
E.L. ROBERTS
908-1219
Richard & Barbara D. Shine
582-887
5.266 Ac.
5.274 Ac.

* Inadequate description

✓ indicates survey on file with tax map dept

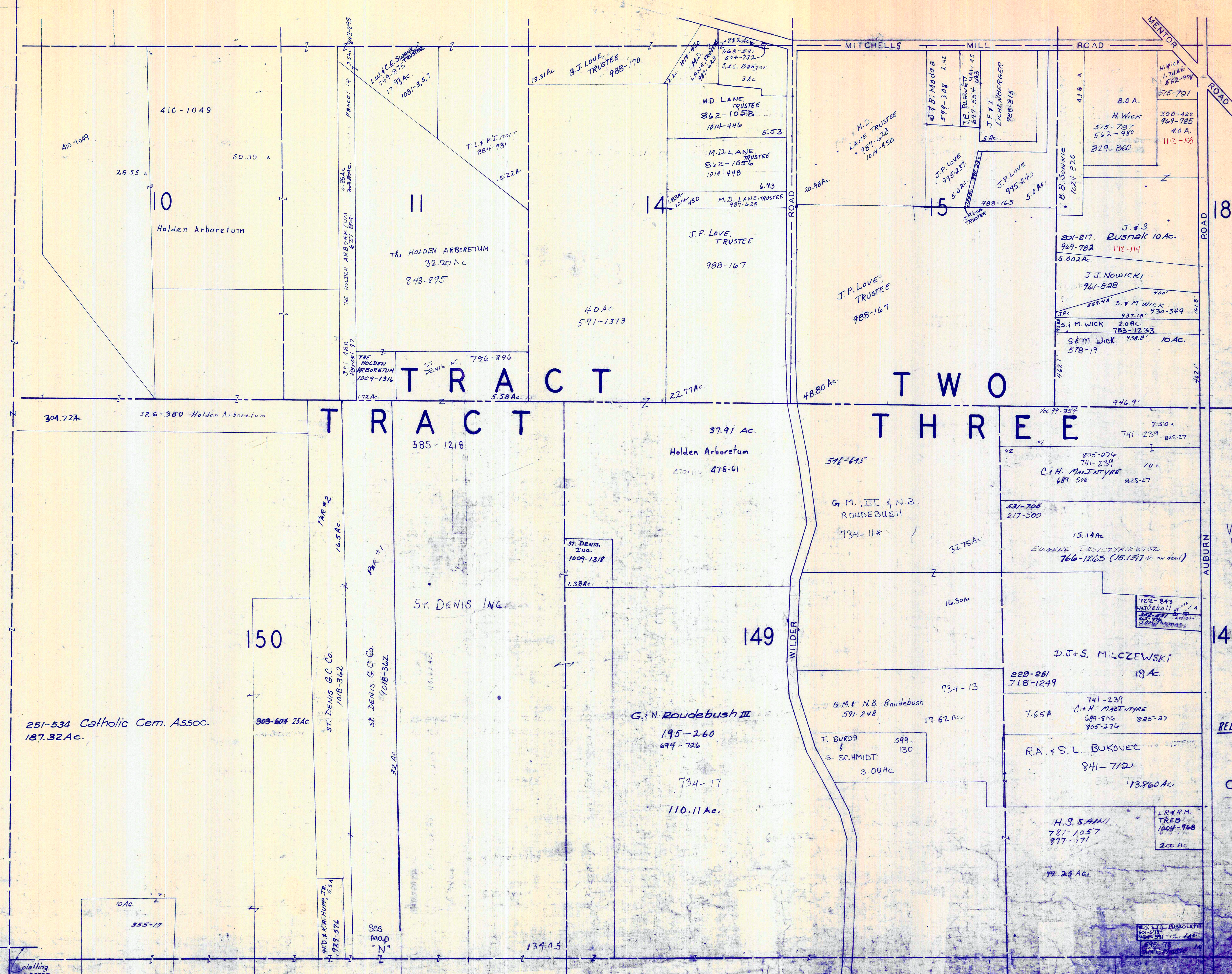


K I R T L A N D H I G H W A Y
 C O U N T Y
 T W R P
 T R A C T
 T R A C T
 L A K E
 K I R T L A N D
 T W P

JANUARY, 1997
 RELATIVE REPRESENTATION
 CHARDON TWP E

| | | | |
|---|---|---|---|
| A | B | C | D |
| E | F | G | H |
| I | J | K | L |
| M | N | O | P |

* Inadequate description
 indicates survey on file with tax map dept



T R A C T

T W O

T R A C T

T H R E E

Indicates survey on file with tax map dept

* Inadequate description

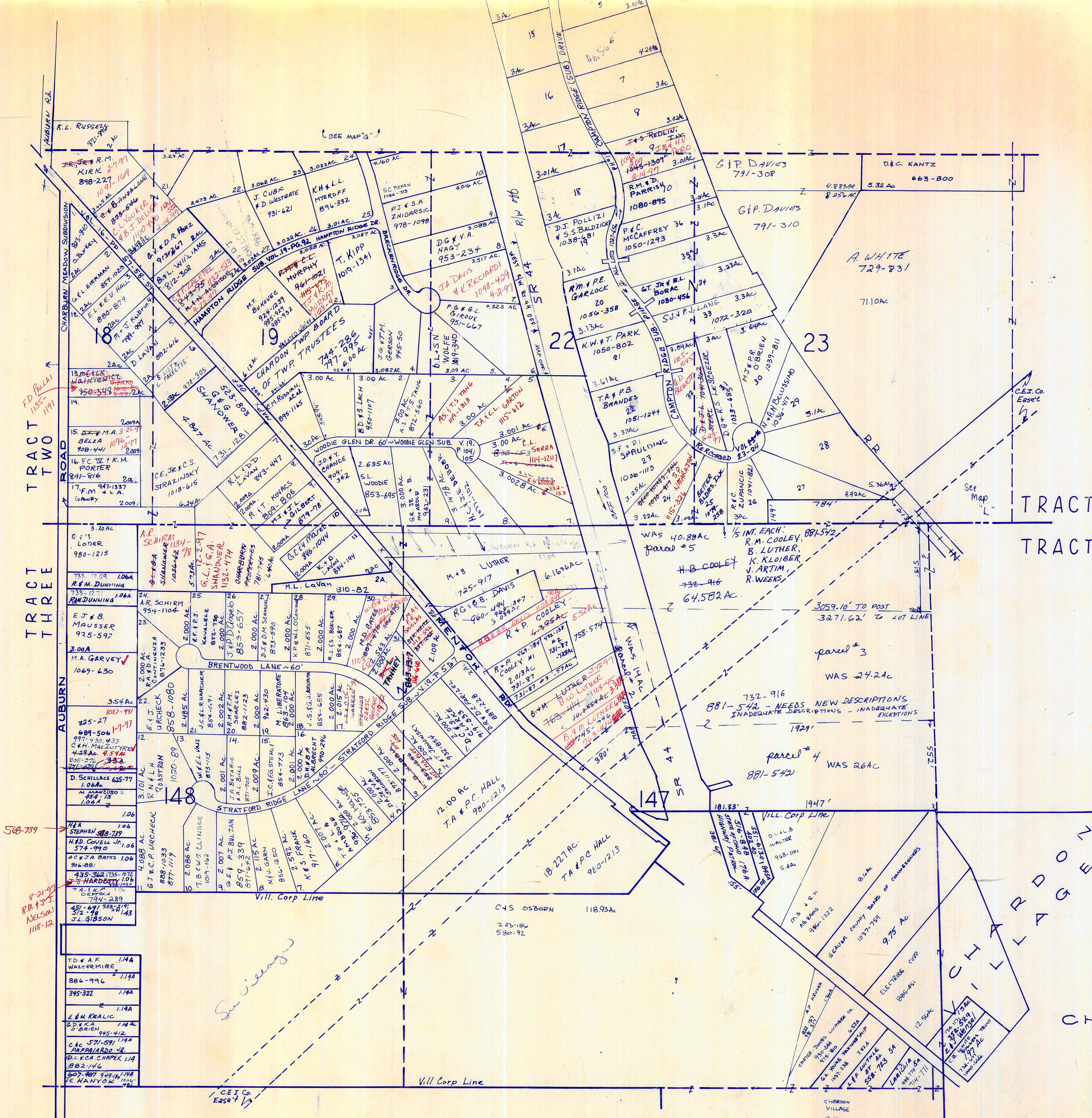
JANUARY 1, 1997
RELATIVE REPRESENTATION

SCALE 1" = 300'

CHARDON TWP

| | | | |
|---|---|---|---|
| A | B | C | D |
| E | F | G | H |
| I | J | K | L |
| M | N | O | P |

plating error



TRACT TWO
TRACT THREE

TRACT TWO
TRACT THREE



SCALE 1 IN = 300 FT.

✓ indicates survey on file with tax map dept.

* Inadequate description

JANUARY 1, 1997
RELATIVE REPRESENTATION

CHARDON TWP-K

| | | | |
|---|---|---|---|
| A | B | C | D |
| E | F | G | H |
| I | J | K | L |
| M | N | O | P |

FD 302
1152-1191

568-739
8-21-97
R.M. & J.T. NELSON
1118-12

See Village

881-542 - NEEDS NEW DESCRIPTIONS
INADEQUATE DESCRIPTIONS - INADEQUATE
EXCEPTIONS

parcel # 4
881-542 WAS 26 AC

parcel # 3
WAS 24.2 AC

WAS 40.88 AC
parcel # 5
1/5 IM. EACH:
R.M. COOLEY,
B. LUTHER,
K. KLOIBER,
J. ARTIM,
R. WEEKS

See Map "L"

CEI Co. Easement

CHARDON VILLAGE 12.10

CHARDON TWP-K

CHARDON TWP-K

CHARDON TWP-K

CHARDON TWP-K

CHARDON TWP-K

CHARDON TWP-K

CHARDON TWP-K

CHARDON TWP-K

CHARDON TWP-K

CHARDON TWP-K

CHARDON TWP-K

CHARDON TWP-K

CHARDON TWP-K

CHARDON TWP-K

CHARDON TWP-K

CHARDON TWP-K

CHARDON TWP-K

CHARDON TWP-K

CHARDON TWP-K

CHARDON TWP-K

CHARDON TWP-K

CHARDON TWP-K

CHARDON TWP-K

CHARDON TWP-K

CHARDON TWP-K

CHARDON TWP-K

CHARDON TWP-K

CHARDON TWP-K

CHARDON TWP-K

CHARDON TWP-K

CHARDON TWP-K

CHARDON TWP-K

CHARDON TWP-K

CHARDON TWP-K

CHARDON TWP-K

CHARDON TWP-K

CHARDON TWP-K

CHARDON TWP-K

CHARDON TWP-K

CHARDON TWP-K

CHARDON TWP-K

CHARDON TWP-K

CHARDON TWP-K

CHARDON TWP-K

CHARDON TWP-K

CHARDON TWP-K

CHARDON TWP-K

CHARDON TWP-K

CHARDON TWP-K

CHARDON TWP-K

CHARDON TWP-K

CHARDON TWP-K

CHARDON TWP-K

CHARDON TWP-K

CHARDON TWP-K

CHARDON TWP-K

CHARDON TWP-K

CHARDON TWP-K

CHARDON TWP-K

CHARDON TWP-K

CHARDON TWP-K

CHARDON TWP-K

CHARDON TWP-K

CHARDON TWP-K

CHARDON TWP-K

CHARDON TWP-K

CHARDON TWP-K

CHARDON TWP-K

CHARDON TWP-K

CHARDON TWP-K

CHARDON TWP-K

CHARDON TWP-K

CHARDON TWP-K

CHARDON TWP-K

CHARDON TWP-K

CHARDON TWP-K

CHARDON TWP-K

CHARDON TWP-K

CHARDON TWP-K

CHARDON TWP-K

CHARDON TWP-K

CHARDON TWP-K

CHARDON TWP-K

CHARDON TWP-K

CHARDON TWP-K

CHARDON TWP-K

CHARDON TWP-K

CHARDON TWP-K

CHARDON TWP-K

CHARDON TWP-K

CHARDON TWP-K

CHARDON TWP-K

CHARDON TWP-K

CHARDON TWP-K

CHARDON TWP-K

CHARDON TWP-K

CHARDON TWP-K

CHARDON TWP-K

CHARDON TWP-K

CHARDON TWP-K

CHARDON TWP-K

CHARDON TWP-K

CHARDON TWP-K

CHARDON TWP-K

CHARDON TWP-K

CHARDON TWP-K

CHARDON TWP-K

CHARDON TWP-K

CHARDON TWP-K

CHARDON TWP-K

CHARDON TWP-K

CHARDON TWP-K

CHARDON TWP-K

CHARDON TWP-K

CHARDON TWP-K

CHARDON TWP-K

CHARDON TWP-K

CHARDON TWP-K

CHARDON TWP-K

CHARDON TWP-K

CHARDON TWP-K

CHARDON TWP-K

CHARDON TWP-K

CHARDON TWP-K

CHARDON TWP-K

CHARDON TWP-K

CHARDON TWP-K

CHARDON TWP-K

CHARDON TWP-K

CHARDON TWP-K

CHARDON TWP-K

CHARDON TWP-K

CHARDON TWP-K

CHARDON TWP-K

CHARDON TWP-K

CHARDON TWP-K

CHARDON TWP-K

CHARDON TWP-K

CHARDON TWP-K

CHARDON TWP-K

CHARDON TWP-K

CHARDON TWP-K

CHARDON TWP-K

CHARDON TWP-K

CHARDON TWP-K

CHARDON TWP-K

CHARDON TWP-K

CHARDON TWP-K

CHARDON TWP-K

CHARDON TWP-K

CHARDON TWP-K

CHARDON TWP-K

CHARDON TWP-K

CHARDON TWP-K

CHARDON TWP-K

CHARDON TWP-K

CHARDON TWP-K

CHARDON TWP-K

CHARDON TWP-K

CHARDON TWP-K

CHARDON TWP-K

CHARDON TWP-K

CHARDON TWP-K

CHARDON TWP-K

CHARDON TWP-K

CHARDON TWP-K

CHARDON TWP-K

CHARDON TWP-K

CHARDON TWP-K

CHARDON TWP-K

CHARDON TWP-K

CHARDON TWP-K

CHARDON TWP-K

CHARDON TWP-K

CHARDON TWP-K

CHARDON TWP-K

CHARDON TWP-K

CHARDON TWP-K

CHARDON TWP-K

CHARDON TWP-K

CHARDON TWP-K

CHARDON TWP-K

CHARDON TWP-K

CHARDON TWP-K

CHARDON TWP-K

CHARDON TWP-K

CHARDON TWP-K

CHARDON TWP-K

CHARDON TWP-K

CHARDON TWP-K

CHARDON TWP-K

CHARDON TWP-K

CHARDON TWP-K

CHARDON TWP-K

CHARDON TWP-K

CHARDON TWP-K

CHARDON TWP-K

CHARDON TWP-K

CHARDON TWP-K

CHARDON TWP-K

CHARDON TWP-K

CHARDON TWP-K

CHARDON TWP-K

CHARDON TWP-K

CHARDON TWP-K

CHARDON TWP-K

CHARDON TWP-K

CHARDON TWP-K

CHARDON TWP-K

CHARDON TWP-K

CHARDON TWP-K

CHARDON TWP-K

CHARDON TWP-K

CHARDON TWP-K

CHARDON TWP-K

CHARDON TWP-K

CHARDON TWP-K

CHARDON TWP-K

CHARDON TWP-K

CHARDON TWP-K

CHARDON TWP-K

CHARDON TWP-K

CHARDON TWP-K

CHARDON TWP-K

CHARDON TWP-K

CHARDON TWP-K

CHARDON TWP-K

CHARDON TWP-K

CHARDON TWP-K

CHARDON TWP-K

CHARDON TWP-K

CHARDON TWP-K

CHARDON TWP-K

CHARDON TWP-K

CHARDON TWP-K

CHARDON TWP-K

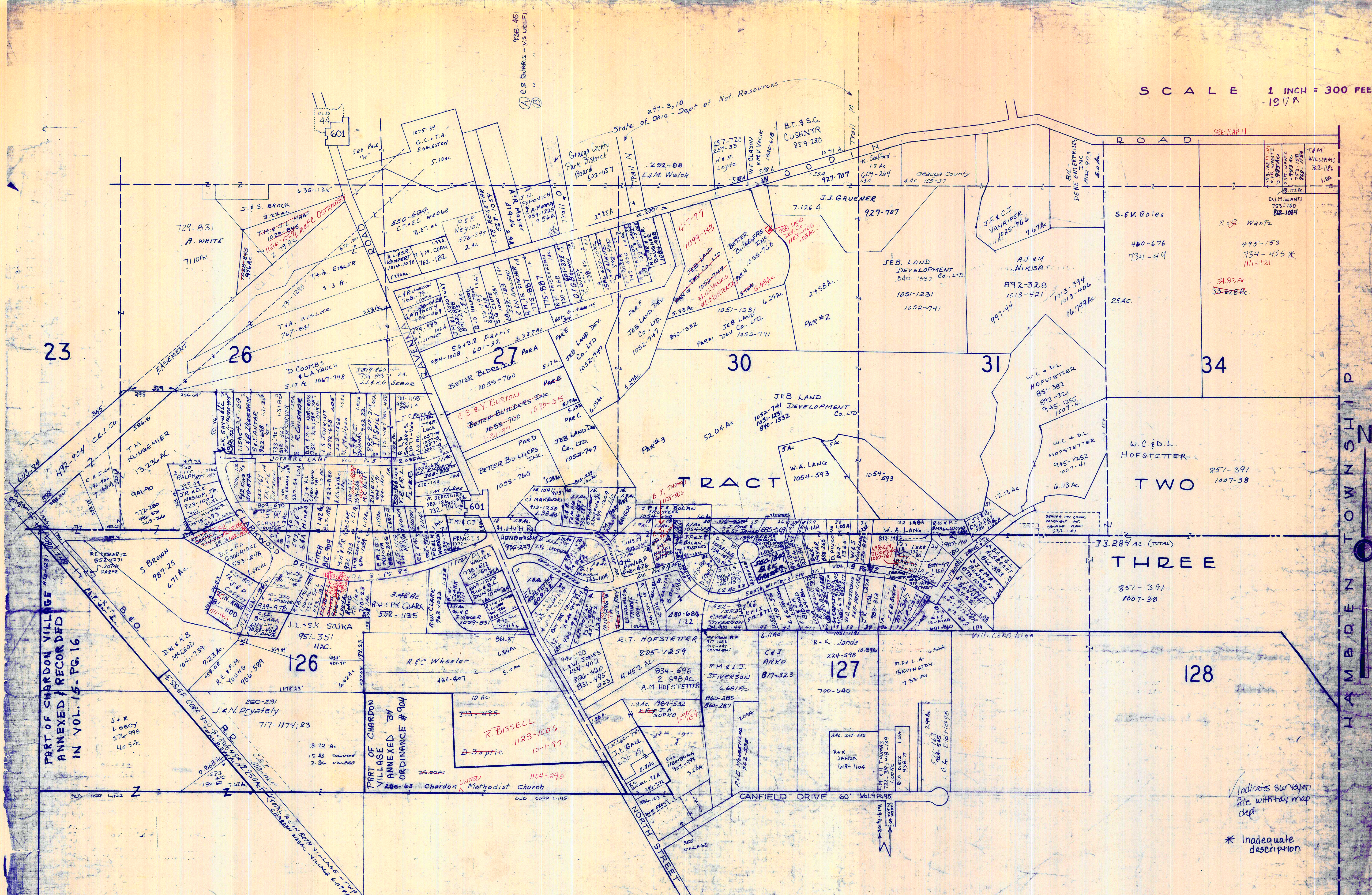
CHARDON TWP-K

CHARDON TWP-K

CHARDON TWP-K

CHARDON TWP-K

SCALE 1 INCH = 300 FEET
1978



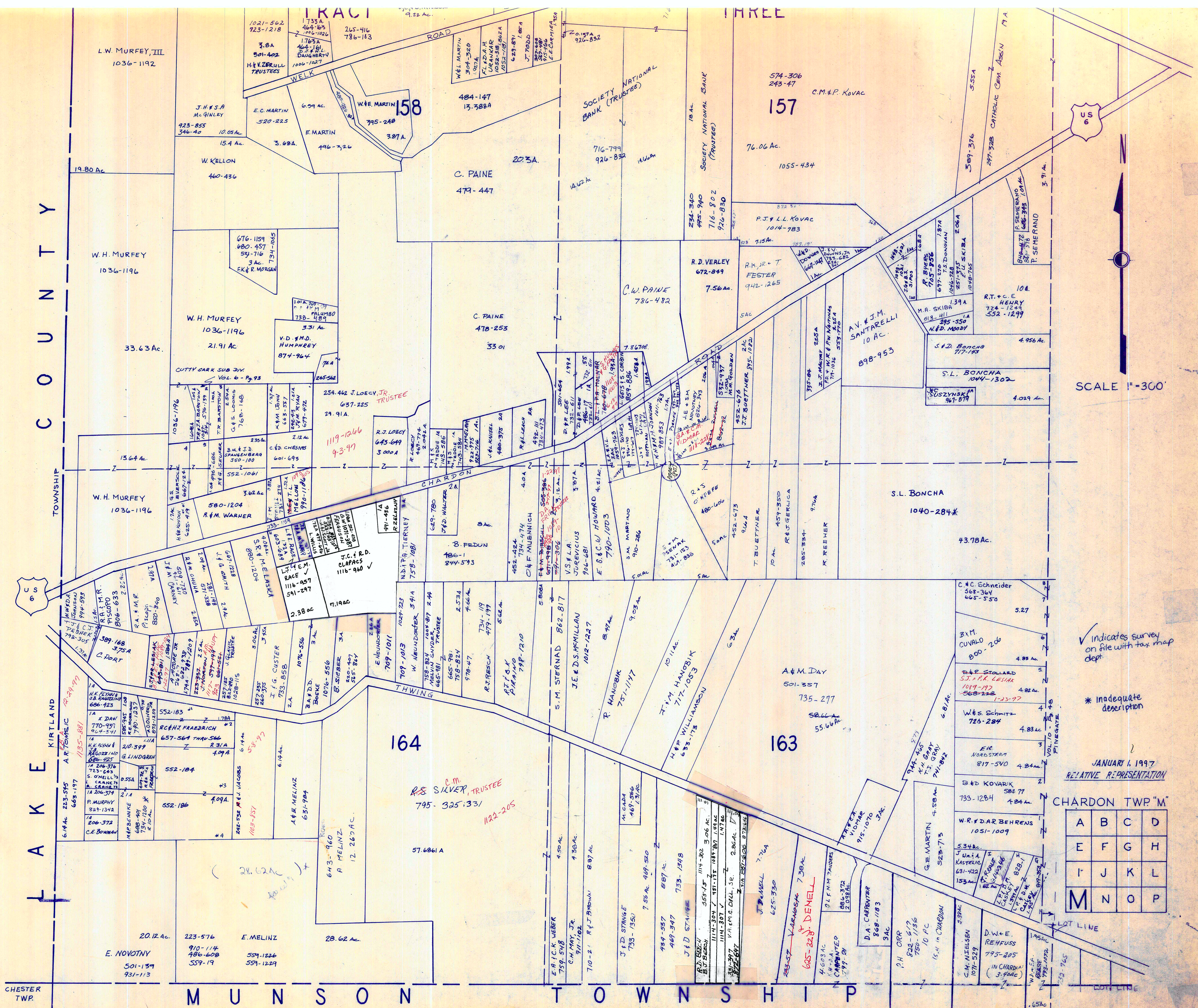
PART OF CHARDON VILLAGE ANNEXED BY RECORD IN VOL. 15 - PG. 16

PART OF CHARDON VILLAGE ANNEXED BY ORDINANCE #904

CHARDON VILLAGE

JANUARY 1, 1997
RELATIVE REPRESENTATION
CHARDON TWP - L

| | | | |
|---|---|---|---|
| A | B | C | D |
| E | F | G | H |
| I | J | K | L |
| M | N | O | P |



C O U N T Y

L A K E

CHESTER TWP.

M U N S O N

T O W N S H I P

SCALE 1"=300'

✓ indicates survey on file with tax map dept.

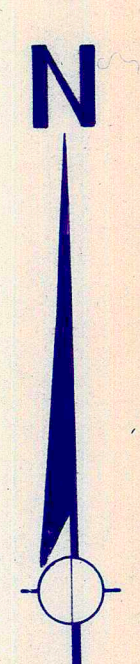
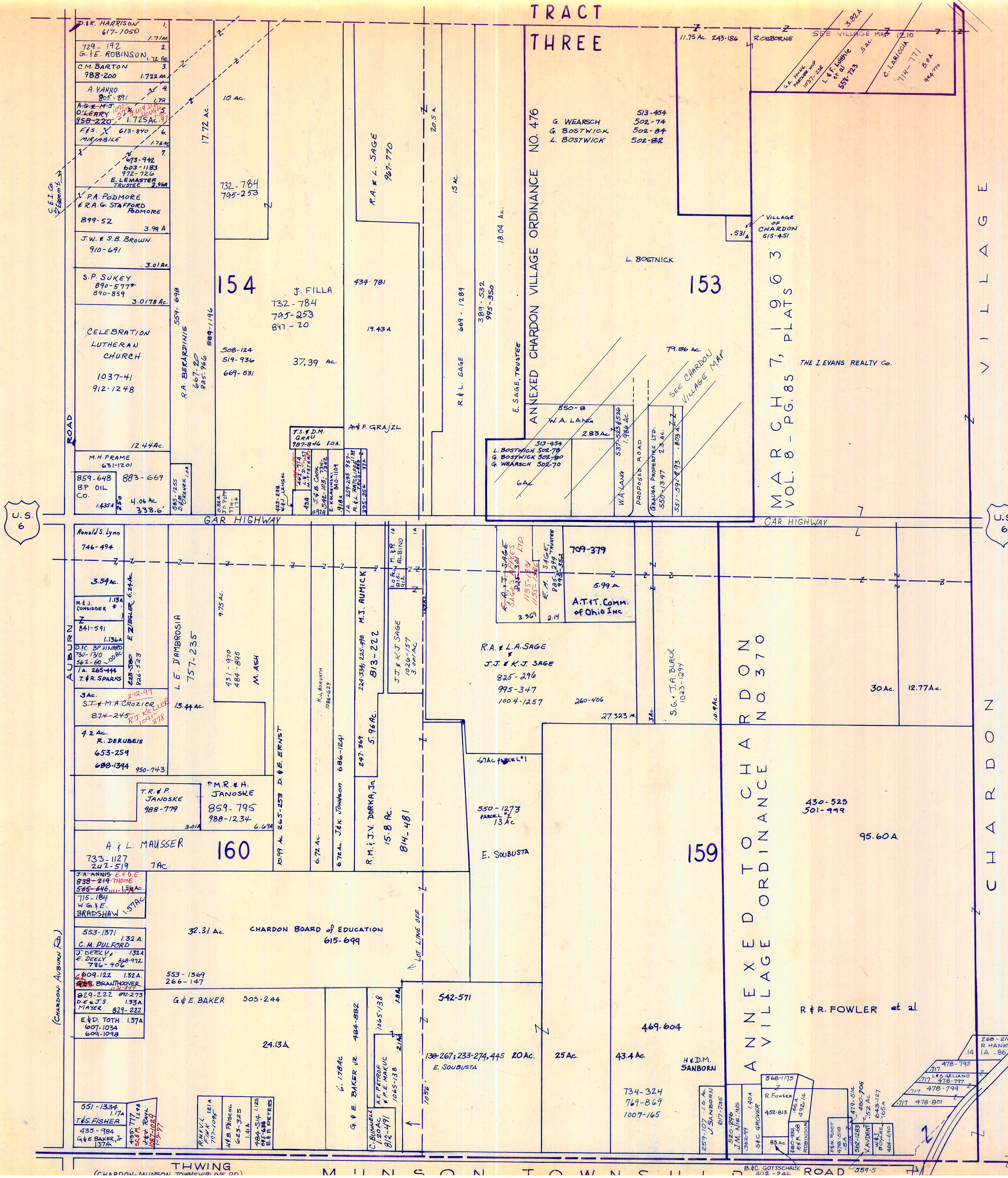
* inadequate description

JANUARY 1, 1997
RELATIVE REPRESENTATION

CHARDON TWP. "M"

| | | | |
|---|---|---|---|
| A | B | C | D |
| E | F | G | H |
| I | J | K | L |
| M | N | O | P |

LOT LINE
EDDY LINE



SCALE 1 in. = 300 FT

4991-169
 Chardon

✓ indicates survey on file with tax map dept.

* Inadequate description

JANUARY 1997
 RELATIVE REPRESENTATION

CHARDON TWP. - O-

| | | | |
|---|---|---|---|
| A | B | C | D |
| E | F | G | H |
| I | J | K | L |
| M | N | O | P |